



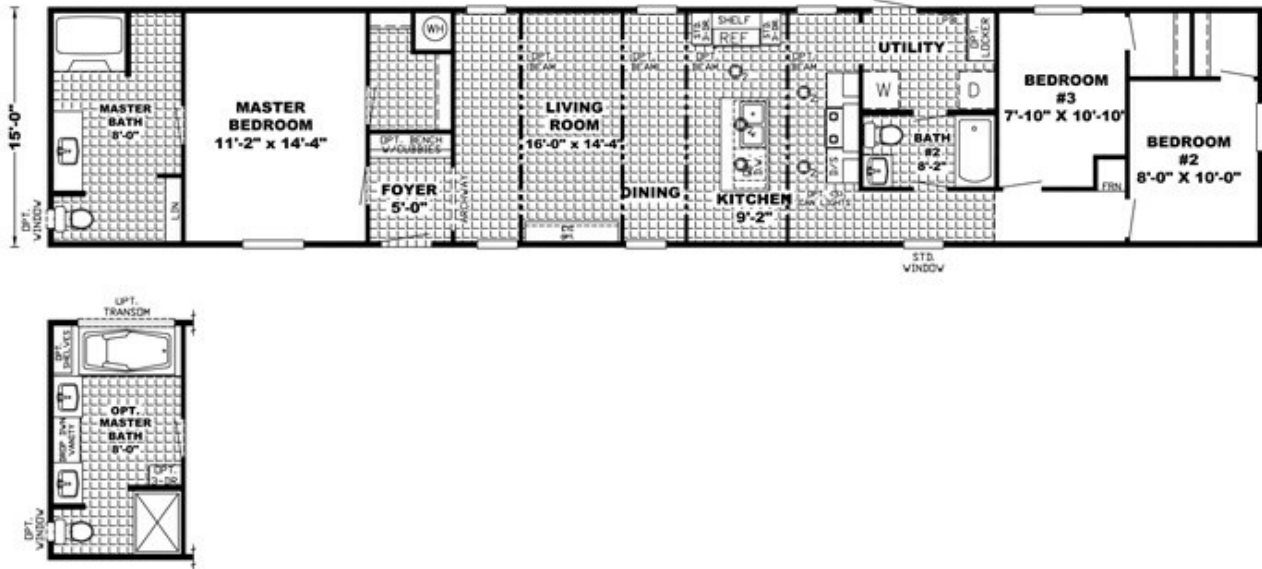
THE PARKSIDE SIG16763D



THE PARKSIDE SIG16763D

Floor plan number: RUS071831AL

3 beds • 2 baths • 1216 sq.ft. • 16' width • 76' depth



Our home building facilities invest in continuous product and process improvements. Plans, dimensions, features, materials, specifications and availability are subject to change without notice or obligation. Renderings and floor plans are representative likenesses of our homes and may differ from the actual homes. We invite you to tour a Home Center near you and inspect the highest value in quality housing available or call (256) 350-6058 to speak with a Home Consultant. Copyright 2017, CMH. All rights reserved.

CLAYTON HOMES-DECATUR

3622 HWY 31 SOUTH
DECATUR, AL 35603

Monday - Thursday: 9am - 7pm
Friday: 9am - 6pm
Saturday: 9am - 5pm
Sunday: Closed

(256) 350-6058